

Light efficiency:

38 Lumen/Watt

Light quality:

CRI: 95.1

Color temperature:

2701 K

Output: 2245 lm

Peak: 20573 cd

Power: 58.8 W

PF: 0.98



Tracking number: [n/a](#)

Product name:

**ElectraPix Bar 16**

Item number:

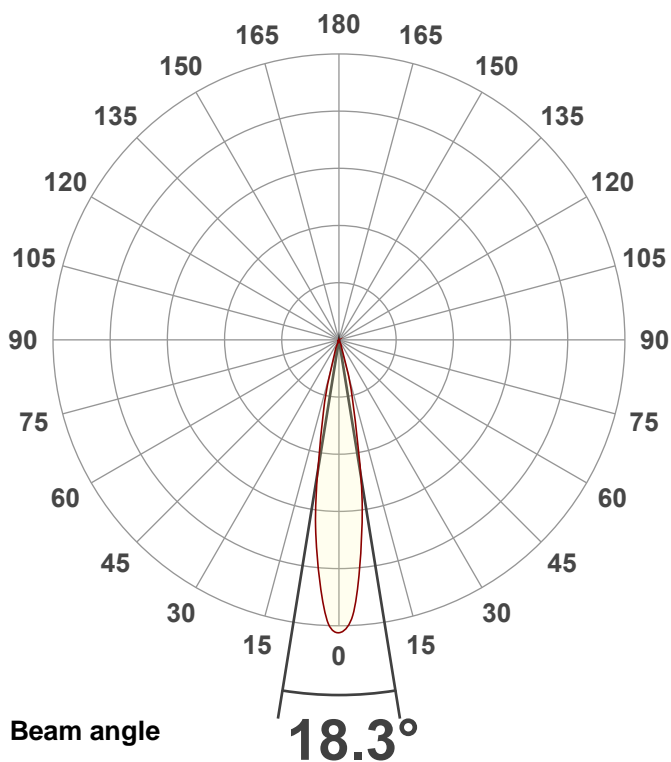
**2700K No Diffusion**

Date and time:

**8/30/2024 9:33:46 AM**

Description:

**@ 12**

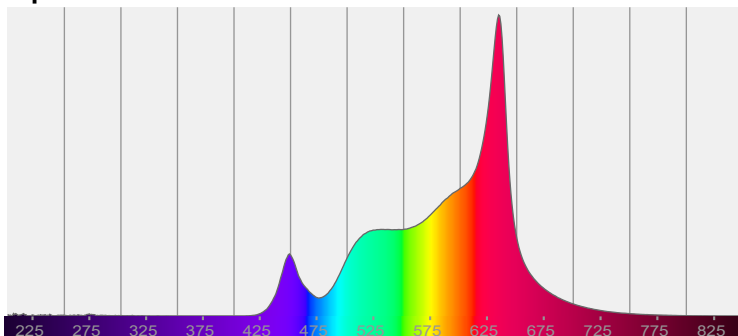


CIE 1931

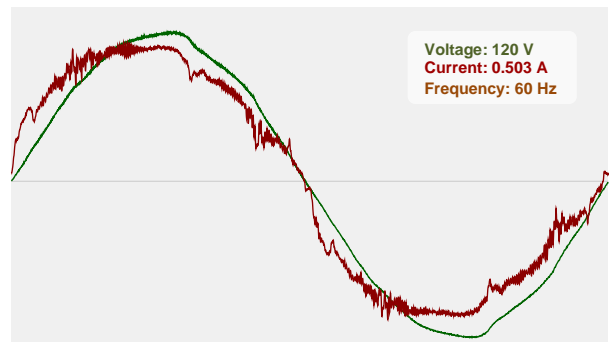
x: 0.461

y: 0.412

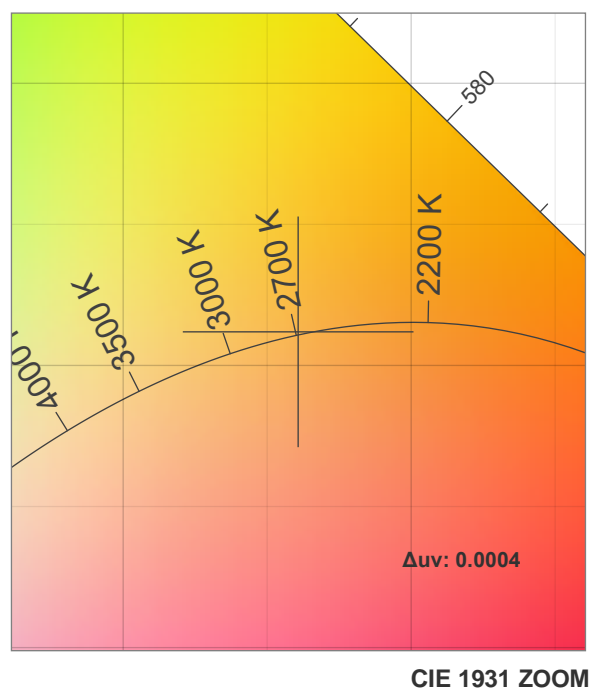
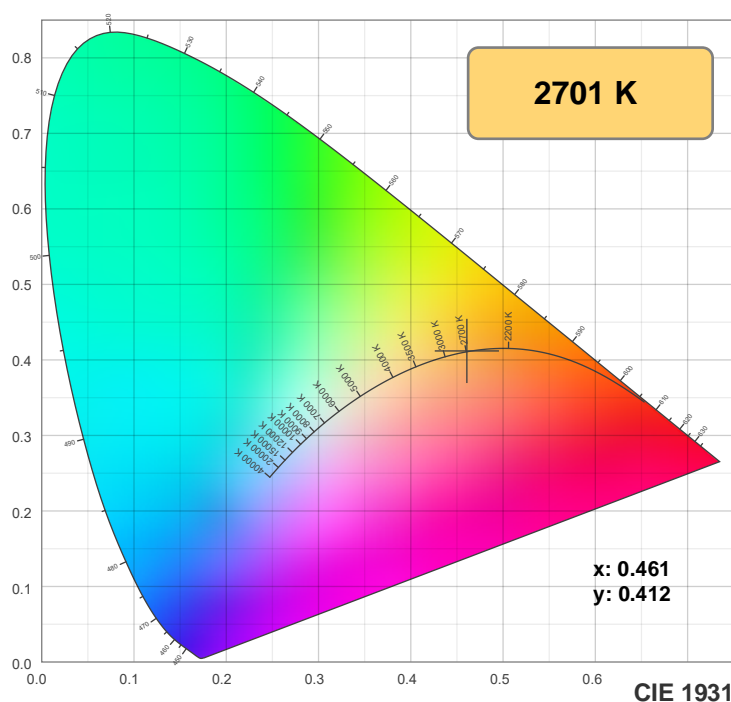
Spectra



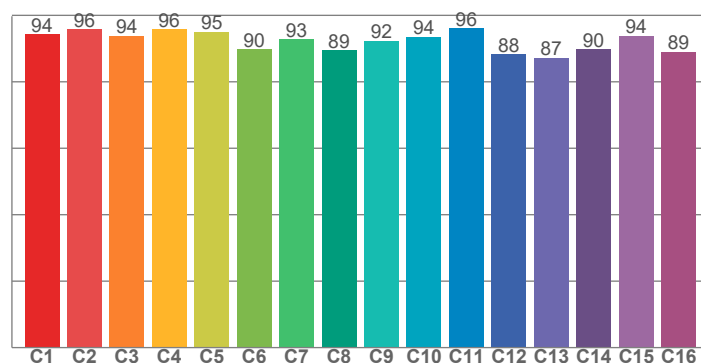
Power



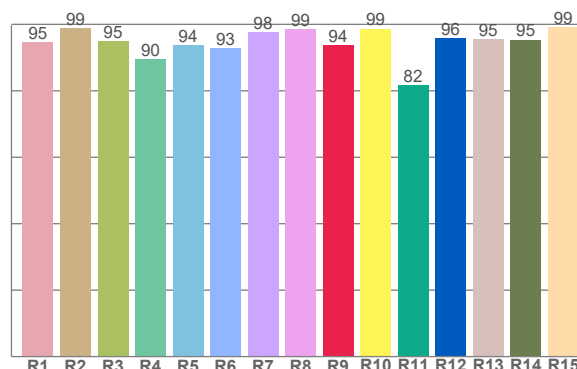
## Color details



**TM-30: 93.0**



**CRI: 95.1 (R1-R8)**



CRI R values, only R1-R8 are used to calculate final CRI value

R1	R2	R3	R4	R5	R6	R7	R8	R9	R10	R11	R12	R13	R14	R15
94.6	98.9	94.8	89.6	93.8	92.8	97.7	98.6	93.7	98.7	81.7	95.9	95.4	95.4	99.1

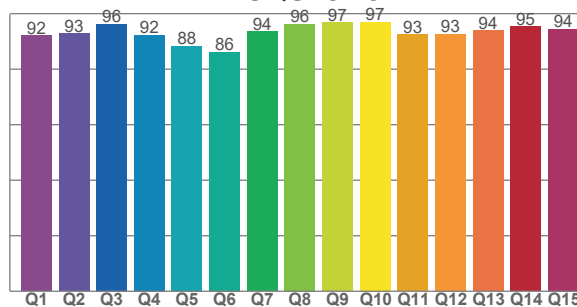
TM30 C values, 16 binned values out of total of 99 C values

C1	C2	C3	C4	C5	C6	C7	C8	C9	C10	C11	C12	C13	C14	C15	C16
94.3	95.8	93.8	95.8	95.0	89.8	92.8	89.4	92.4	93.5	96.1	88.3	87.2	89.7	93.9	89.1

CQS Q values

Q1	Q2	Q3	Q4	Q5	Q6	Q7	Q8	Q9	Q10	Q11	Q12	Q13	Q14	Q15
92.1	92.9	96.2	92.4	88.3	86.2	93.6	96.2	96.8	96.9	92.6	92.6	93.9	95.4	94.5

**CQS: 92.5**



### Color parameters

Color temperature	Color rendering index	Red component	Color fidelity	Color gamut	Color quality scale	Color coordinate cie 1931	Color coordinate cie 1931	Color coordinate	Color coordinate	Color deviation from black body
CCT	CRI	CRI R9	TM30 Rf	TM30 Rg	CQS	x	y	u	v	$\Delta uv$
2701 K	95.1	93.7	93.0	103.8	92.5	0.461	0.412	0.262	0.352	0.0004

# TM-30 details

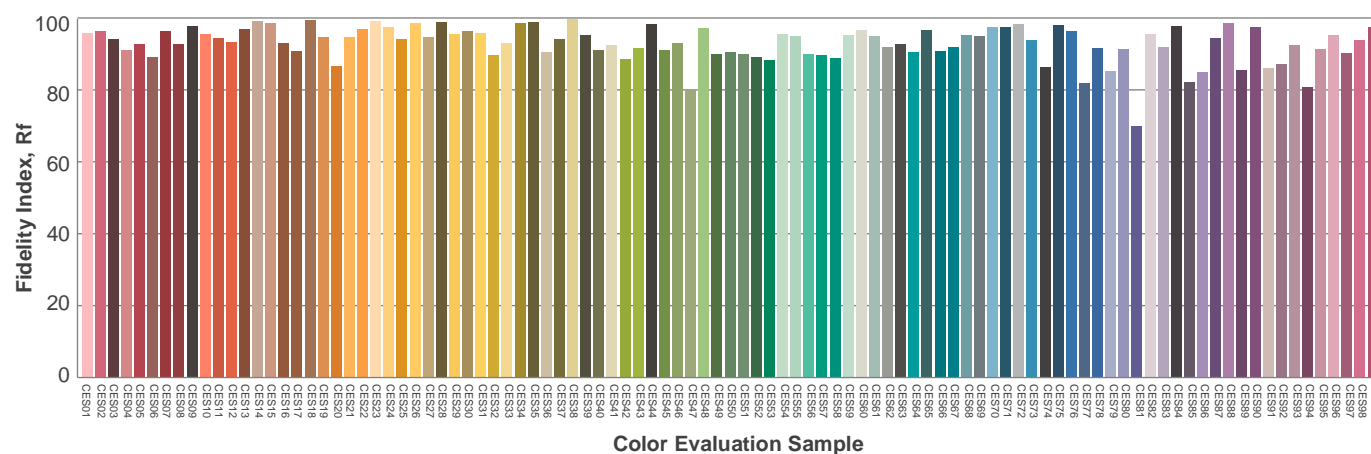
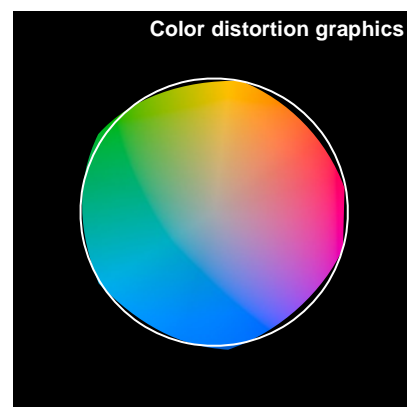
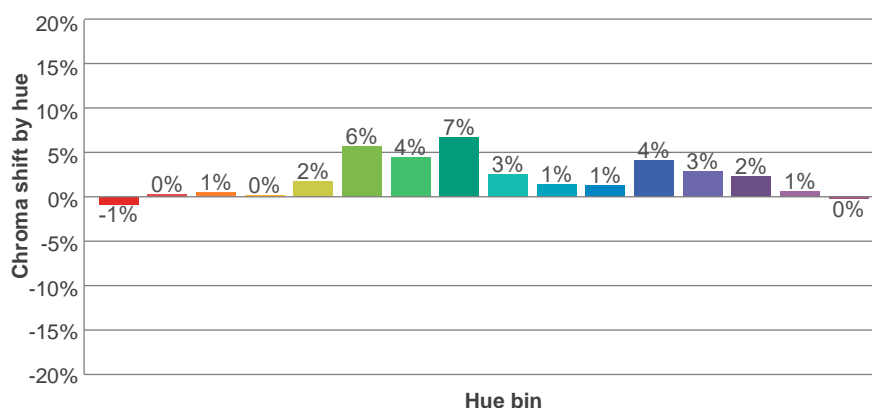
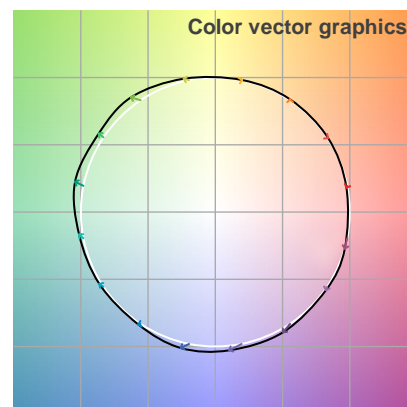
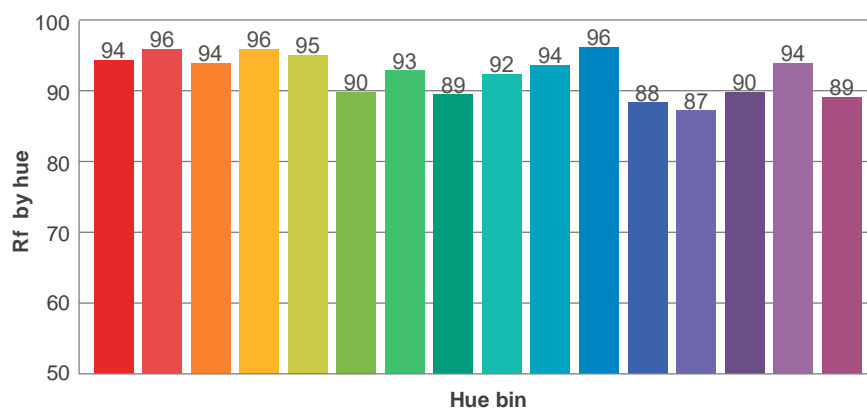
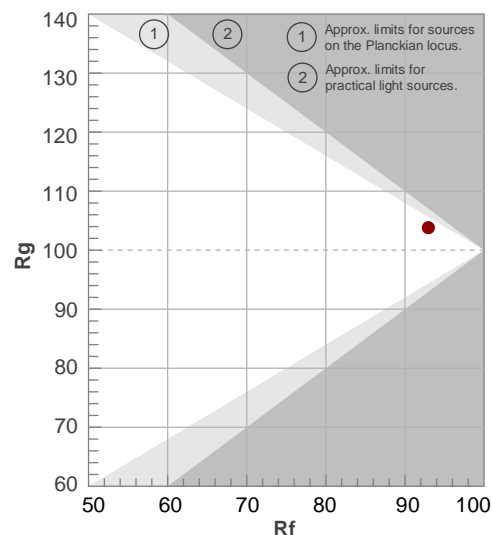
**Rf 93.0**

Fidelity index Rf

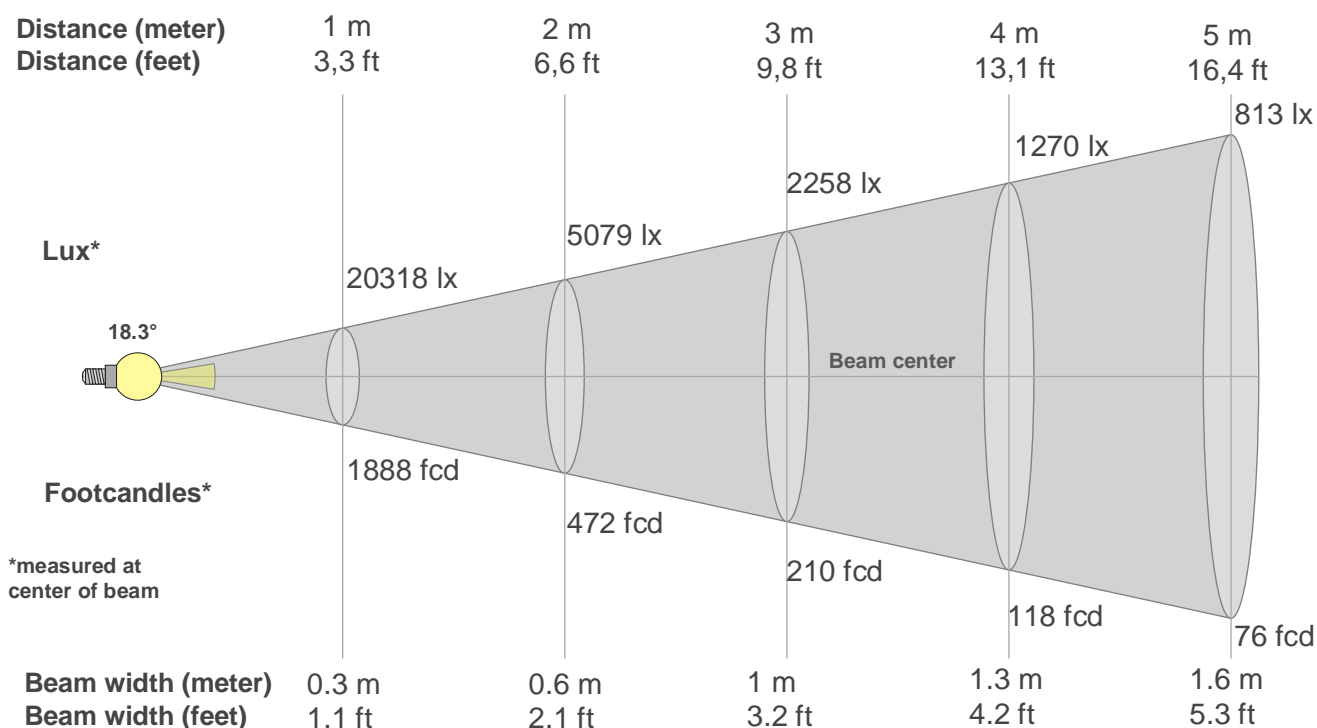
**Rg 103.8**

Gamut index Rg

Hue Bin	Ri	Shifts (%)	
		Chroma	Hue
1	94	-1%	-1%
2	96	0%	-1%
3	94	1%	0%
4	96	0%	0%
5	95	2%	4%
6	90	6%	5%
7	93	4%	0%
8	89	7%	-2%
9	92	3%	-3%
10	94	1%	-4%
11	96	1%	-1%
12	88	4%	-5%
13	87	3%	-10%
14	90	2%	-8%
15	94	1%	-3%
16	89	0%	-8%



## Beam details



### Beam intensities from 1-20m

1m	2m	3m	4m	5m	6m	7m	8m	9m	10m	11m	12m	13m	14m	15m	16m	17m	18m	19m	20m
3.3ft	6.6ft	9.8ft	13.1ft	16.4ft	19.7ft	23ft	26.2ft	29.5ft	32.8ft	36.1ft	39.4ft	42.7ft	45.9ft	49.2ft	52.5ft	55.8ft	59.1ft	62.3ft	65.6ft
20318lx	5079lx	2258lx	1270lx	813lx	564lx	415lx	317lx	251lx	203lx	168lx	141lx	120lx	104lx	90lx	79lx	70lx	63lx	56lx	51lx
1887.6fcd	471.9fcd	209.7fcd	118fcd	75.5fcd	52.4fcd	38.5fcd	29.5fcd	23.3fcd	18.9fcd	15.6fcd	13.1fcd	11.2fcd	9.6fcd	8.4fcd	7.4fcd	6.5fcd	5.8fcd	5.2fcd	4.7fcd

### Intensities in 0° c-plane

0°	1°	2°	3°	4°	5°	6°	7°	8°	9°	10°	11°	12°	13°	14°	15°	16°	17°	18°	19°
20.3K	20.2K	20.1K	19.8K	18.2K	16.7K	15.2K	13.6K	12.1K	10.5K	8.9K	7.4K	5.8K	4.3K	3.6K	2.8K	2.1K	1.4K	0.7K	0.6K
100%	99%	99%	97%	90%	82%	75%	67%	60%	52%	44%	36%	28%	21%	18%	14%	10%	7%	4%	3%

### Intensities in 90° c-plane

0°	1°	2°	3°	4°	5°	6°	7°	8°	9°	10°	11°	12°	13°	14°	15°	16°	17°	18°	19°
20.3K	20.2K	20.1K	19.8K	18.2K	16.7K	15.2K	13.6K	12.1K	10.5K	8.9K	7.4K	5.8K	4.3K	3.6K	2.8K	2.1K	1.4K	0.7K	0.6K
100%	99%	99%	97%	90%	82%	75%	67%	60%	52%	44%	36%	28%	21%	18%	14%	10%	7%	4%	3%

### Intensities in 180° c-plane

0°	1°	2°	3°	4°	5°	6°	7°	8°	9°	10°	11°	12°	13°	14°	15°	16°	17°	18°	19°
20.3K	20.4K	20.6K	19.4K	18.0K	16.6K	15.2K	13.8K	12.2K	10.5K	8.9K	7.2K	5.6K	4.6K	3.8K	3.0K	2.1K	1.3K	1.0K	0.8K
100%	101%	101%	95%	88%	82%	75%	68%	60%	52%	44%	36%	27%	23%	19%	15%	10%	6%	5%	4%

### Intensities in 270° c-plane

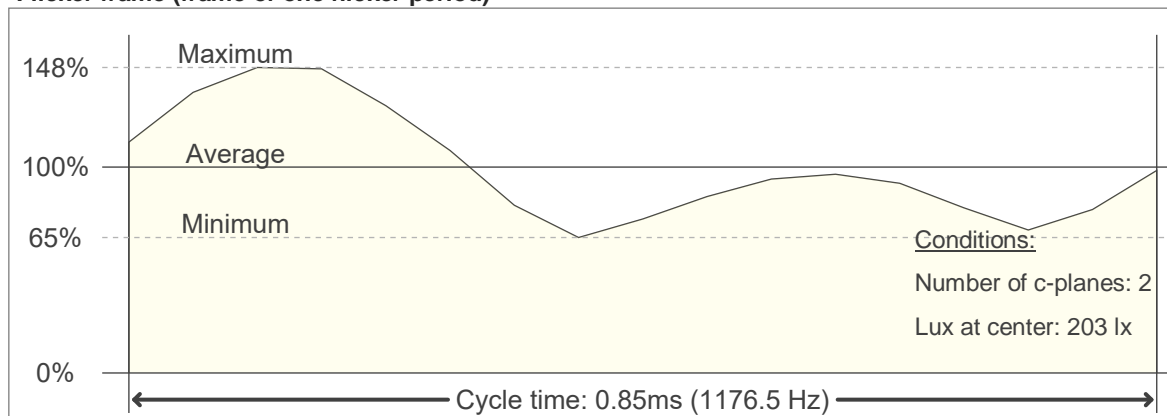
0°	1°	2°	3°	4°	5°	6°	7°	8°	9°	10°	11°	12°	13°	14°	15°	16°	17°	18°	19°
20.3K	20.4K	20.6K	19.4K	18.0K	16.6K	15.2K	13.8K	12.2K	10.5K	8.9K	7.2K	5.6K	4.6K	3.8K	3.0K	2.1K	1.3K	1.0K	0.8K
100%	101%	101%	95%	88%	82%	75%	68%	60%	52%	44%	36%	27%	23%	19%	15%	10%	6%	5%	4%

Beam angle 50%	Field angle 10%	Cutoff angle 2,5%	Intensity ratio in 120° cone	Intensity ratio in 90° cone
18.3°	32.2°	40.5°	99.9%	99.4%

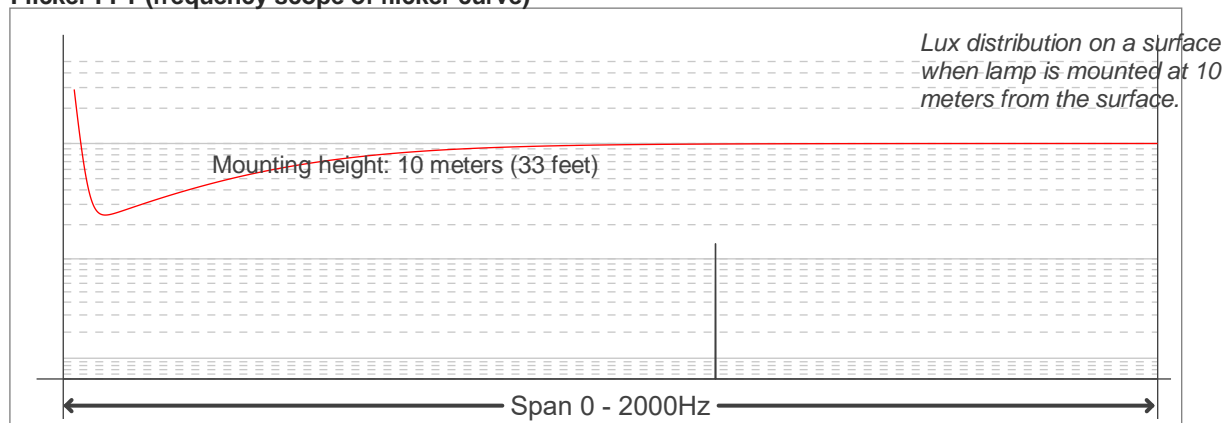
## Flicker

**Flicker curve (complete sampled flicker signal)**

**Flicker frame (frame of one flicker period)**



**Flicker FFT (frequency scope of flicker curve)**



**Flicker results:**

Flicker frequency:		1176.47 Hz	
Flicker index:	0.11	JA8/10 40Hz	0.16 %
Flicker percentage:	54.75 %	JA8/10 90Hz	0.3 %
SVM: (Visual flicker)	0.28	JA8/10 200Hz	0.65 %
PstLM	0.05	JA8/10 400Hz	1.26 %
Mp	0.03	JA8/10 1000Hz	3.49 %

**Flicker conditions:**

Sample rate:	20000 samples/second
--------------	----------------------